

## Especificaciones VDMA

DIAMETRO ( mm )	32	40	50	63	80	100	125	
FLUIDO	Aire Comprimido							
ACCIONAMIENTO	Doble Accion							
AMORTIGUACION	Con Amortiguacion acolchonada							
Maxima presion de trabajo	10 bar							
CONEXION	1/8"	1/4"		3/8"		1/2"		
Minima presion de trabajo	1 bar							
Temperatura	5 - 60 °C							
Velocidad de Operacion	50 500 mm/seg							
LUBRICACION	Se recomienda ISO VG32							
CARRERA	25 A 1500 mm							
MATERIAL	Aleacion de Aluminio							

# ISO / VDMA Standard Cylinder

Double Acting, Single Rod / Double Rod

## Series SI, SID, SIJ

# KINETIC

### How to Order

SI 50 50 25 S LB

#### Mounting style

##### SI Series

Nil	LB	FA	FB	CA
CB	TC	TC-M-1	TC-M-2	

Available only for  $\varnothing 32 \sim \varnothing 100$

##### SID Series

Nil	LB	FA	TC	TC-M-1	TC-M-2

Available only for  $\varnothing 32 \sim \varnothing 100$

##### SIJ Series

Nil	LB	FA	TC	TC-M-1	TC-M-2

Available only for  $\varnothing 32 \sim \varnothing 100$

#### Magnet

Nil	Without magnet	S	Built-in magnet
-----	----------------	---	-----------------

#### Adjustable stroke (Only for SIJ Series)

25	25mm	50	50mm	75	75mm
----	------	----	------	----	------

#### Cylinder stroke

\* Refer to "Standard stroke".

#### Bore size (mm)

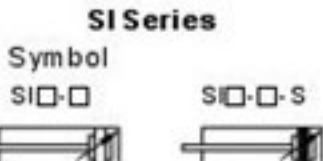
32	40	50	63	80	100	125	160	200
----	----	----	----	----	-----	-----	-----	-----

#### Model

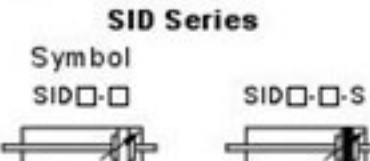
SI	Double acting, single rod	SID	Double rod type
SIJ	Adjustable stroke type		
Conforms to	ISO 6431 & VDMA 24562		



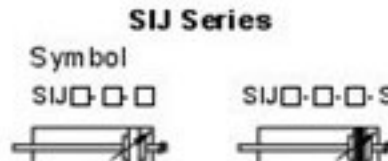
SI Series



SID Series



SIJ Series



### Specifications

Bore size (mm)	32	40	50	63	80	100	125	160	200
Action	Double acting, single / double rod								
Fluid	Filtered compressed air								
Proof pressure	1.5 MPa								
Operating pressure range	0.1~0.9 MPa								
Ambient and fluid temperature	-5~70°C (No freezing)								
Port size	G1/8		G1/4		G3/8		G1/2		G3/4
Piston rod thread	M10×1.25	M12×1.25	M16×1.5		M20×1.5		M27×2.0	M36×2.0	
Cushion	Adjustable air cushion at both ends								

Note: Please contact with ANSSION for the mounting accessories.

E-07 E-mail: kinetic@pneumatic-products.com / jane@pneumatic-products.com www.pneumatic-products.com

# KINETIC

## ISO / VDMA Standard Cylinder

Double Acting, Single Rod / Double Rod

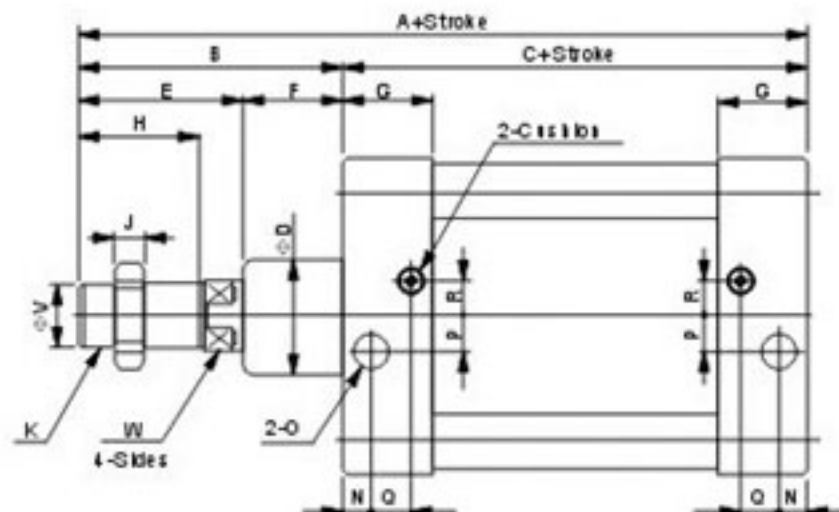
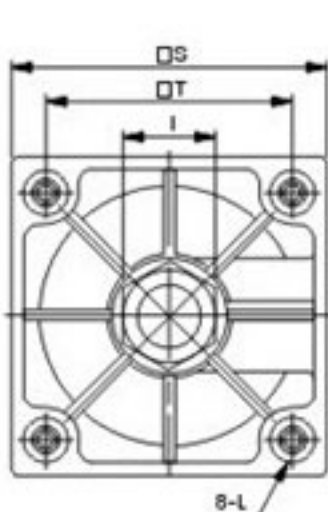
### Series SI, SID, SIJ

### Standard Stroke

Bore size (mm)	Standard stroke (mm)																	Maximum stroke	Available stroke				
32	25	50	75	80	100	125	150	160	175	200	250	300	350	400	450	500	1000	2000					
40	25	50	75	80	100	125	150	160	175	200	250	300	350	400	450	500	600	700	800	1200	2000		
50	25	50	75	80	100	125	150	160	175	200	250	300	350	400	450	500	600	700	800	900	1000	1200	2000
63	25	50	75	80	100	125	150	160	175	200	250	300	350	400	450	500	600	700	800	900	1000	1500	2000
80	25	50	75	80	100	125	150	160	175	200	250	300	350	400	450	500	600	700	800	900	1000	1500	2000
100	25	50	75	80	100	125	150	160	175	200	250	300	350	400	450	500	600	700	800	900	1000	1500	2000
125	25	50	75	80	100	125	150	160	175	200	250	300	350	400	450	500	600	700	800	900	1000	1500	2000
160	25	50	75	80	100	125	150	160	175	200	250	300	350	400	450	500	600	700	800	900	1000	1500	2000
200	25	50	75	80	100	125	150	160	175	200	250	300	350	400	450	500	600	700	800	900	1000	1500	2000

### Dimensions

#### SI□□□□-S (Basic style)



Note: The dimensions of built-in magnet type cylinder are exactly the same as without-magnet type cylinder.

Bore size (mm)	A	B	C	D	E	F	G	H	I	J	K	L	N	O	P	Q	R	S	T	V	W
32	142	48	94	30	28	20	27.5	22	17	6	M10×1.25	M6	13.5	G1/8	4	7.5	7	47	32.5	12	10
40	159	54	105	35	34	22	32	24	19	7	M12×1.25	M6	16	G1/4	6	8.5	9	53	38	16	13
50	175	69	106	40	42	27	31	32	24	8	M16×1.5	M8	18.5	G1/4	8.5	7.5	7.5	65	46.5	20	17
63	190	69	121	45	40	29	33	32	24	8	M16×1.5	M8	19	G3/8	7.5	8.5	9	75	56.5	20	17
80	214	86	128	45	53	33	33	40	30	10	M20×1.5	M10	19	G3/8	11	8.5	13.5	95	72	25	22
100	229	91	138	55	55	36	37	40	30	10	M20×1.5	M10	18	G1/2	13.5	9.5	14.5	115	89	25	22
125	279	119	160	60	74	45	46	54	41	13.5	M27×2.0	M12	23	G1/2	14	12	14	140	110	32	27
160	332	152	180	65	94	58	50	72	55	18	M36×2.0	M16	25	G3/4	15	12	20	180	140	40	36
200	347	167	180	75	100	67	50	72	55	18	M36×2.0	M16	25	G3/4	15	12	20	220	175	40	36

Tel:0086-574-83033136 0086-574-83033137 Fax:0086-574-83033135

E-08

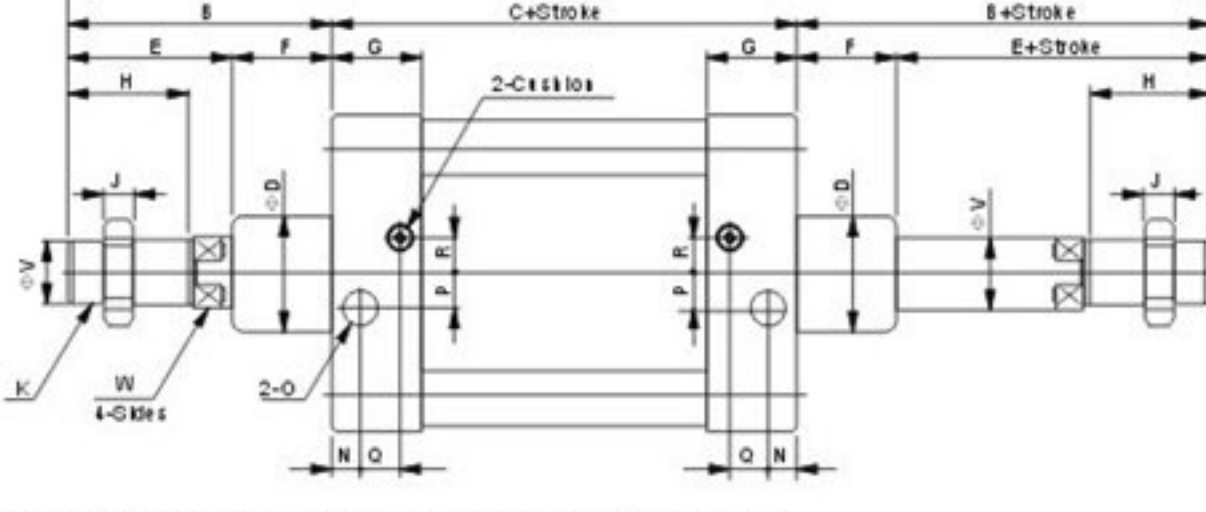
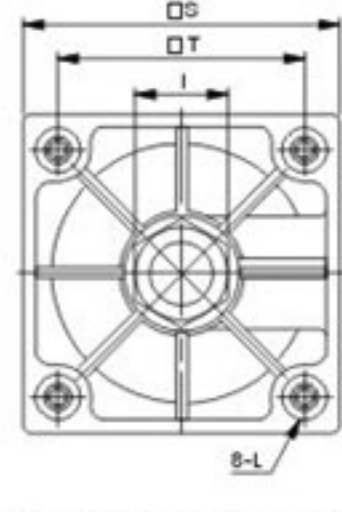
# ISO / VDMA Standard Cylinder

Double Acting, Single Rod / Double Rod

## Series SI, SID, SIJ

# KINETIC

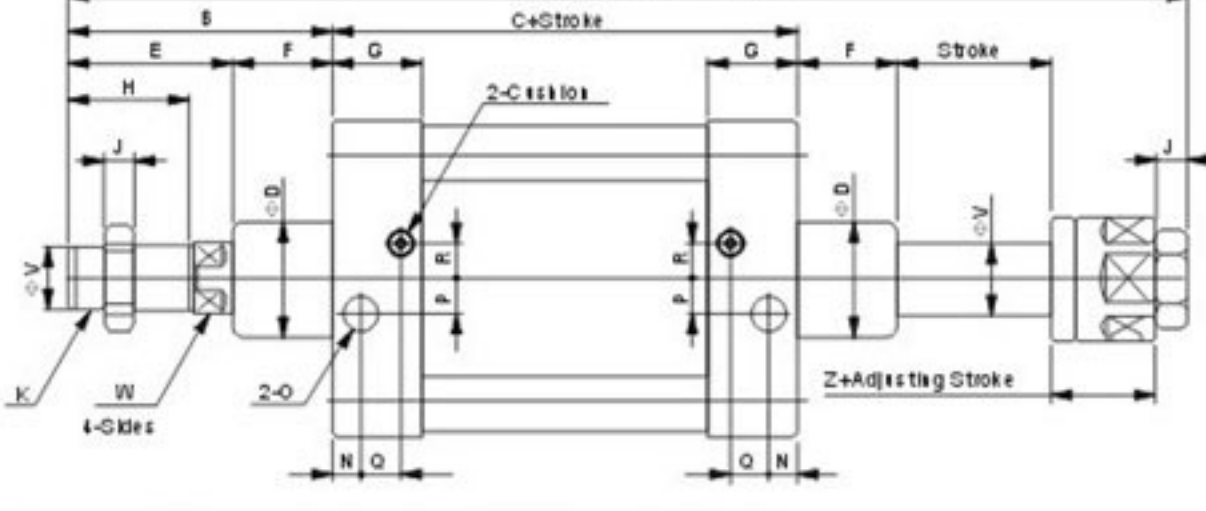
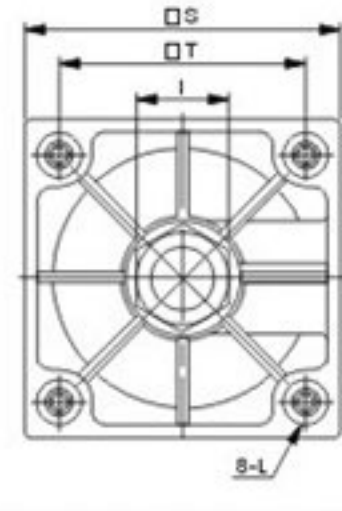
#### SID□□□□-S (Double rod style)



Note: The dimensions of built-in magnet type cylinder are exactly the same as without-magnet type cylinder.

Bore size (mm)	A	B	C	D	E	F	G	H	I	J	K	L	N	O	P	Q	R	S	T	V	W
32	190	48	94	30	28	20	27.5	22	17	6	M10×1.25	M6	13.5	G1/8	4.5	6.5	6.5	47	32.5	12	10
40	213	54	105	35	32	22	32	24	19	7	M12×1.25	M6	16	G1/4	6	8.5	9	53	38	16	13
50	244	69	106	40	42	27	31	32	24	8	M16×1.5	M8	18.5	G1/4	8.5	7.5	7.5	65	46.5	20	17
63	259	69	121	45	40	29	33	32	24	8	M16×1.5	M8	19	G3/8	7.5	8.5	9	75	56.5	20	17
80	300	86	128	45	53	33	33	40	30	10	M20×1.5	M10	19	G3/8	11	8.5	13.5	95	72	25	22
100	320	91	138	55	55	36	37	40	30	10	M20×1.5	M10	18.5	G1/2	13.5	9.5	14.5	115	89	25	22
125	398	119	160	60	74	45	46	54	41	13.5	M27×2.0	M12	23	G1/2	14	12	14	140	110	32	27
160	484	152	180	65	94	58	50	72	55	18	M36×2.0	M16	25	G3/4	15	12	20	180	140	40	36
200	514	167	180	75	100	67	50	72	55	18	M36×2.0	M16	25	G3/4	15	12	20	220	175	40	36

#### SIJ□□□□-S (Adjustable stroke style)



Note: The dimensions of built-in magnet type cylinder are exactly the same as without-magnet type cylinder.

Bore size (mm)	A	B	C	D	E	F	G	H	I	J	K	L	N	O	P	Q	R	S	T	V	W	Z
32	189	48	94	30	28	20	27.5	22	17	6	M10×1.25	M6	13.5	G1/8	4.5	6.5	6.5	47	32.5	12	10	27
40	209	54	105	35	32	22	32	24	19	7	M12×1.25	M6	16	G1/4	6	8.5	9	53	38	16	13	28
50	234	69	106	40	42	27	31	32	24	8	M16×1.5	M8	18.5	G1/4	8.5	7.5	7.5	65	46.5	20	17	31
63	250	69	121	45	40	29	33	32	24	8	M16×1.5	M8	19	G3/8	7.5	8.5	9	75	56.5	20	17	31
80	286	86	128	45	53	33	33	40	30	10	M20×1.5	M10	19	G3/8	11	8.5	13.5	95	72	25	22	39
100	304	91	138	55	55	36	37	40	30	10	M20×1.5	M10	18.5	G1/2	13.5	9.5	14.5	115	89	25	22	39
125	378	119	160	60	74	45	46	54	41	13.5	M27×2.0	M12	23	G1/2	14	12	14	140	110	32	27	54
160	486	152	180	65	94	58	50	72	55	18	M36×2.0	M16	25	G3/4	15	12	20	180	140	40	36	68
200	486	167	180	75	100	67	50	72	55	18	M36×2.0	M16	25	G3/4	15	12	20	220	175	40	36	72