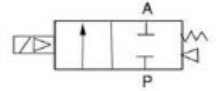
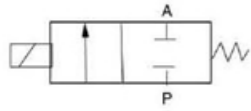


Especificaciones SLC

SERIE	2P025-06	2P025-08
FLUIDO	Aire, Agua, Aceite y Gas	
ACCIONAMIENTO	Accionamiento Directo	
TIPO DE VALVULA	2 vias 2 posiciones	2 vias 2 posiciones doble solenoide
PRESION DE OPERACION	0 a 101 psi (0 a 7 bar)	
CONEXION	1/8" NPT	1/4" NPT
Maxima presion de trabajo	150 psi	
Temperatura	-10 a 80 °C	
ESTADO INICIAL	Normalmente Cerrada	
Maxima frecuencia	5 ciclos/seg	
Tamaño de Orificio	2.5 mm (3/32)	
Material de Empaques	NBR	
PROTECCION	IP65 (DIN40050)	
VOLTAJES	12 VDC, 24 VDC, 24 VAC , 110 VAC, 220 VAC	
MATERIAL	Ingenieria plasti-acero	

2P 系列二位二通电磁阀(常闭型)
2P Series 2/2 Solenoid Valve (Normal Close)

THP 系列二位二通电磁阀(常闭型)
THP Series 2/2 Solenoid Valve (Normal Close)



订货举例 How to Order?

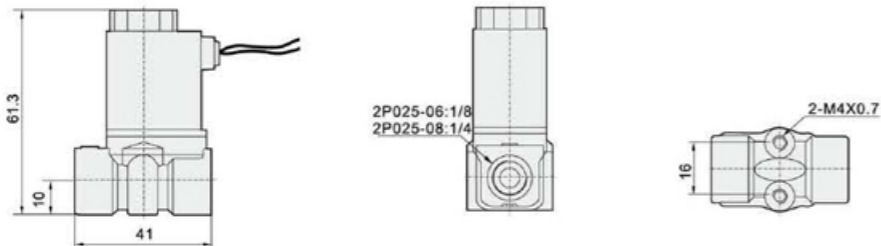
2P	--	025	--	06	--	E1
2P系列 2P series		流量口径 Orifice 025: 2.5mm		接管口径 Port size 06: 1/8" 08: 1/4"		标准电压 Voltage E1: AC110V E2: AC220V E3: AC380V E4: DC24V E5: DC12V E6: AC36V E7: AC24V
		密封材料 空白: 丁腈橡胶 V: 氟橡胶 E: 乙丙橡胶 Seal material Blank: NBR V: VITON E: EPDM				

* 2P塑料阀系列, 二位二通, 1/4"接管口径, 丁腈橡胶密封件, AC220V, 型号: 2P025-08E2
* 2P series, 2 port, 2 position, 1/4" port size, NBR seal, AC220V, Model: 2P025-08E2

产品特性 Product Features

- * 常闭电磁阀, 塑料阀体, 成本低
- * 紧凑型结构设计, 节省空间
- * AC 24V/36V/110V/220V/380V 50/60HZ DC 12V/24V 可以选择, 电压波动范围: +15%/-10%
- * 直动式电磁阀
- * Normal close, plastic steel body at low cost
- * Compact design, space saving
- * Voltage range available: AC 24V/36V/110V/220V/380V 50/60HZ DC 12V/24V +15%/-10% permitted
- * Direct acting solenoid valve

外形尺寸图 Main Dimensions (mm)



规格 Specifications

* 以下表格中电压为AC220V Voltage: AC220V

型号 Model	2P025-06E2	2P025-08E2
工作介质 Working medium	空气、水、油、瓦斯 / Air, Water, Oil, Gas	
动作型式 Acting type	直动式, 常闭 Direct acting type, N.C.	
流量口径 Orifice(mm)	2.5	
Cv值 Cv value	0.23	
接管口径 Port size	1/8"	1/4"
使用流体粘度 Fluid viscosity	20 CST 以下 (Below 20 CST)	
工作压力 Working pressure(Bar)	0-7	
最大耐压力 Guaranteed pressure(Bar)	11	
工作温度 Working temperature (°C)	-5-80	
电压波动范围 Voltage range	-15 - 10%	
耗电量 Power consumption	AC:7VA/50Hz, 9VA/50Hz, DC:6W	
阀体材质 Valve body material	工程塑料 / Engineering plastic steel	
密封件材质 Seal material	NBR, VITON (可选 optional)	

订货举例 How to Order?

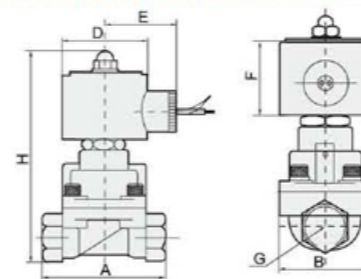
THP	--	06	--	E2	--	2.5L	--	S2	--		--	
THP系列 THP series		接管口径 Port size 06: 1/8" 08: 1/4" 10: 3/8" 15: 1/2" 20: 3/4" 25: 1" 35: 1-1/4" 40: 1-1/2" 50: 2" 25F: 1"法兰连接 Flange 35F: 1-1/4"法兰连接 Flange 40F: 1-1/2"法兰连接 Flange 50F: 2"法兰连接 Flange		电压 Voltage E1: AC110V E2: AC220V E3: AC380V E4: DC24V E5: DC12V E6: AC36V E7: AC24V E8: DC110V E9: DC48V E10: DC36V		密封材料 空白: NBR 丁腈橡胶 T: Teflon 聚四氟乙烯 V: VITON 氟橡胶 E: EPDM 乙丙橡胶 (N,V,E φ5.5mm以下可选) Seal material Blank: NBR T: Teflon V: VITON E: EPDM (N,V,E orifice ≤ φ5.5mm optional)	流量口径 Orifice(mm) 2.5L: 2.5 4.5L: 4.5		阀体材质 空白: 铜阀体 S1: SS316不锈钢阀体 S2: SS304不锈钢阀体 Valve body Blank: Brass S1: SS316 S2: SS304		线圈型式 空白: DIN接线盒式 F: 引出线式 Coil type Blank: DIN connctor F: Flying leads	控制方式 空白: 常闭 H: 常开 Control style Blank: Normal close H: Normal open
		如口径与口径一致, 型号中流量标识省略 Cancel if same with port size										

- * THP系列, 二位二通, 接管口径1/8", AC110V, 丁腈橡胶密封件, 流量口径 2.5mm, 铜阀体, 常闭, DIN线圈, 型号: THP06E1-2.5L
- * THP系列, 二位二通, 接管口径3/8", AC220V, 聚四氟乙烯密封件, 流量口径 15mm, SS304阀体, 常开, 引出线线圈, 型号: THP10TE2-15LS2HF
- * THP series, 2 port, 2 position, 1/8" port size, AC110V, NBR seal, orifice: 2.5mm, brass valve body, normal close, DIN coil, model: THP06E1-2.5L
- * THP series, 2 port, 2 position, 3/8" port size, AC220V, teflon seal, orifice: 15mm, SS304 valve body, normal open, flying leads coil, model: THP10TE2-15LS2HF

产品特性 Product Features

- * 二位二通常闭电磁阀, 阀体材质: 铜、不锈钢304、不锈钢316
- * 有多种密封件可供选择, 以适合不同的介质
- * 接管口径从1/8"到2"
- * 可配接线盒式线圈和引出线式线圈, 有螺纹连接和法兰连接可以选择
- * 活塞先导式, 耐高温高压
- * Normal close, available body: brass, SS304, SS316
- * Multiple seals are available for different medium
- * Wide size range from 1/8" to 2"
- * DIN style / flying leads coil, thread / flange connection
- * Piston pilot solenoid valve with high working pressure and temperature

外形尺寸图 Main Dimensions (mm)



流量特性表 Flow Chart

