

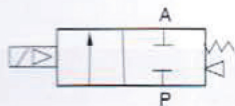
Especificaciones 2WP

SERIE	2WP-10	2WP-15	2WP-20	2WP-25	2WP-40
FLUIDO	Aire, Agua, Agua Caliente, Liquidos y Gas				
ACCIONAMIENTO	Internamente Piloteada				
TIPO DE VALVULA	2 vias 2 posiciones				
PRESION DE OPERACION	7.5 a 130 psi (0.5 a 9.5 bar)				
CONEXION	3/8" NPT	1/2" NPT	3/4" NPT	1" NPT	1 1/2" NPT
Maxima presion de trabajo	150 psi				
Temperatura	-10 a 80 °C				
ESTADO INICIAL	Normalmente Cerrada				
Maxima frecuencia	3 ciclos/seg				
Tamaño de Orificio	13 mm	13 mm	20 mm	25 mm	45 mm
Material de Empaques	NBR				
PROTECCION	IP65 (DIN40050)				
VOLTAJES	12 VDC, 24 VDC, 24 VAC , 110 VAC, 220 VAC				
MATERIAL	Ingenieria plastico Nylon				

ESP Series



ESP-10



订货举例 How to Order?

ESP -- 10 -- E2

ESP系列
ESP Series

接管口径
Port size
10:3/8"
15:1/2"
20:3/4"
25:1"
35:1-1/4"
40:1-1/2"

电压 Voltage
E1:AC110V E8:DC110V
E2:AC220V E9:DC48V
E3:AC380V E10:DC36V
E4:DC24V
E5:DC12V
E6:AC36V
E7:AC24V

* ESP系列, 二位三通, AC110V, 3/8"接管口径, 常闭, 型号: ESP-10E1

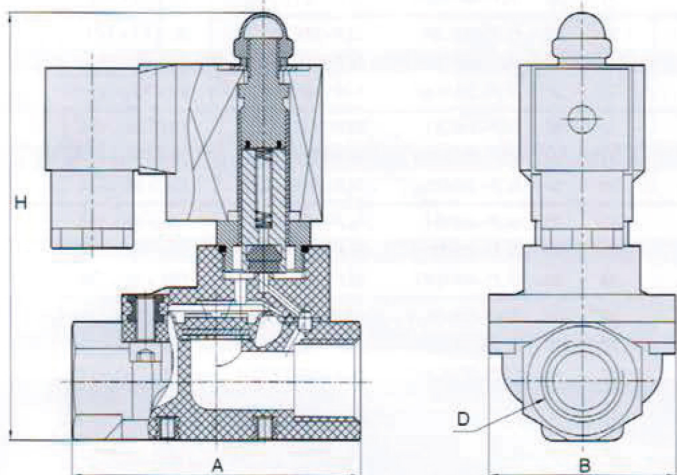
* ESP Series, 2 port, 2 position, AC110V, 3/8" port size, Normal Close, model: ESP-10E1

产品特性 Product Features

- * 常闭电磁阀, 增强尼龙阀体, 成本更低
- * 接管口径从3/8" 到1-1/2"
- * 膜片先导式, 工作压力偏低

- * Normal close, reinforced nylon body, lower cost
- * Sizes range from 3/8" to 1-1/2"
- * Diaphragm pilot solenoid valve, with lower working pressure

外形尺寸图 Main Dimensions (mm)



型号 Model	长 Length(A)	宽 Width(B)	高 Height(H)	接管口径 Port size(G)
ESP-10	74	48	109	3/8"
ESP-15	74	48	109	1/2"
ESP-20	90	85	128	3/4"
ESP-25	90	85	128	1"
ESP-35	120	110	152	1-1/4"
ESP-40	120	110	152	1-1/2"

规格 Specifications

产品型号 Model	ESP-10	ESP-15	ESP-20	ESP-25	ESP-35	ESP-40
工作介质 Working medium	空气、水、瓦斯、热水、液体 Air, Gas, Water, Liquid					
工作型式 Acting type	先导式 Pilot acting type					
流量孔径 Orifice(mm)	15	15	25	25	40	40
接管口径 Port size	3/8"	1/2"	3/4"	1"	1-1/4"	1-1/2"
工作压力 Working pressure(Bar)	0.5-7					
最大耐压力 Guaranteed pressure(Bar)	9					
工作温度 Working temperature(°C)	0-65					
阀体材质 Valve body material	增强尼龙 Reinforce Nylon					
密封件材质 Seal material	NBR					